



Product Catalogue

DWMM-A

LXLC

Turbine Water Meter

DWMM-A
(Water Meters)



Waterworks

Dorot's valves are especially designed to comply with all the demands of Waterworks systems such as Pressure Management, Low Flow Regulation, Leakage Prevention, Pump Control, Level Control, Surge Prevention, Wastewater and Water Treatment.

Irrigation

Dorot is a leader in Automatic Control valves for irrigation applications: Drip Irrigation, Greenhouses, Turf and Landscaping. The innovative state of the art products are made of a variety of materials such as Cast Iron, Ductile Iron, Steel, Stainless Steel, Bronze, Polyamide and uPVC.

Construction And Industry

Dorot offers control applications for high rise buildings such as Flow and Pressure Regulation, Water Hammer Prevention and Reservoir Level Control.

Fire Protection

Dorot offers a variety of valves for Fire Protection applications with UL Approvals.

Filtration And Water Treatment

Dorot offers a variety of Back Flushing valves for Filtration Systems. These valves are made of high durability materials for water treatment of aggressive media.



Application

Woltman type water meters are used in industrial and municipal sites to measure the volume of cold potable water passing through the pipeline.

Working Conditions

Water temperature: T50 or T30

Water pressure: $\leq 1.6\text{MPa}$

Installation Requirements

- Meter shall be full of water while measuring.
- Install the meter on a straight pipe with a clearance of 10 times the pipe's diameter up-stream and 5 times the pipe's diameter down-stream.
- Pipeline must be flushed before installation.
- Meter will be installed in a vertical, horizontal or inclined position

Features

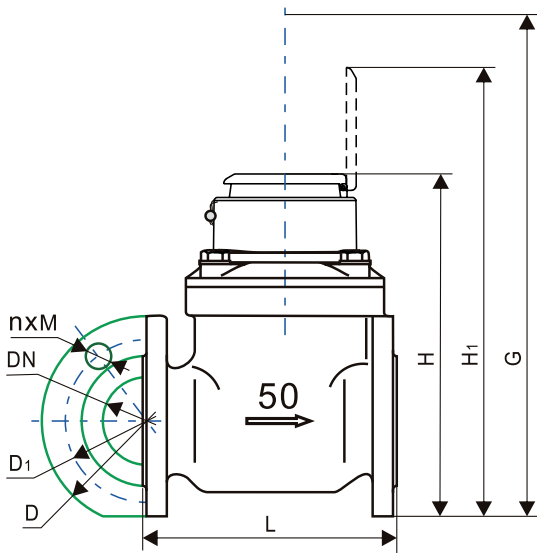
- Super dry type with copper can register (IP68)
- Hermetically sealed register (magnetic coupling)
- Low Head Loss
- 16 bar maximum working pressure
- Easy maintenance of the measuring unit
- Dial Plate can be supplied in metric or imperial units
- The totalizer has big and clear numerals
- Maximum working temp. 60°C
- Register may be rotated 360°
- Equipped with an option for electrical output
- Hot water meters in sizes 2" to 8"



Dimensions & Weights for pressure rating PN16

Nominal diameter	DN	40	50	65	80	100	125	150	200	250	300	350	400	500
Length (mm)	L	260	200	200	225	250	250	300	350	450	500	500	600	800
Height (mm)	H	225	252	262	272	282	297	341	371	489	516	560	647	785
Working height (mm)	H1	303	339	349	359	369	384	428	458	576	603	603	723	838
Maintaining height (mm)	G	360	400	400	400	400	400	500	500	710	730	730	830	930
Outside diameter (mm)	D	150	165	185	200	220	250	285	340	405	460	520	580	715
Circle diameter (mm)	D1	110	125	145	160	180	210	240	295	355	410	470	525	650
Connecting bolt quantity	nxM	4xM16			8xM16			8xM20	12xM20	12xM24		16xM24	16xM27	20xM30
Meter weight (Kg)			12	13	16	18	20	42	64	94	114		199	340
Body weight (Kg)			8.9	10.1	11.5	13.9	18.8	29.6	43	74.4	93		159	290

Dimension Picture



Available length for selecting

Nominal diameter	For Selecting Length -L (mm)		
DN40 (mm)	300		
DN50 (mm)	250	270	310
DN65 (mm)	250		
DN80 (mm)	300	413	
DN100 (mm)	360	483	
DN150 (mm)	430		
DN400 (mm)	500		
DN500 (mm)	500		

Performance data according to EC-Type Approval (ISO 4064: 2005)

Nominal diameter	DN	40	50	65	80	100	125	150	200	250	300	350	400	500
Maximum flow rate (m ³ /h)	Q4	31.25	50	78.75	78.75	125	200	312.5	500	787.5	1250	1250	2000	3125
Nominal flow rate (m ³ /h)	Q3	25	40	63	63	100	160	250	400	630	1000	1000	1600	2500
Transition flow rate (m ³ /h)	Q2	0.8	0.8	1.26	1.26	2	3.2	5	8	12.5	20	20	32	50
Minimum flow rate (m ³ /h)	Q1	0.5	0.5	0.7875	0.7875	1.25	2	3.125	5	7.785	12.5	12.5	20	31.25
Measuring range	R	50	80											

Description of the Register

Nominal diameter	DN 40/50/65/80/100/125	DN 150/200	DN 250/300/350/400/500
Number of black numbered roller	6	6	6
Number of red numbered roller	0	0	0
Number of black pointer	0	1	2
Number of red pointer	3	2	1
Maximum reading (m ³)	999999.999	9999999.99	99999999.9
Minimum reading (m ³)	0.0005	0.005	0.05

Maximum Permissible Error

When water temperature Class is T30:

In the lower zone from Q1 inclusive up to but excluding Q2 is $\pm 5\%$

In the upper zone from Q2 inclusive up to and including Q4 is $\pm 2\%$

When water temperature Class is T50:

In the lower zone from Q1 inclusive up to but excluding Q2 is $\pm 5\%$

In the upper zone from Q2 inclusive up to and including Q4 is $\pm 3\%$

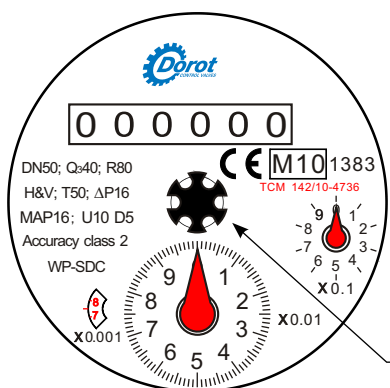
Standards Compliance

ISO 4064: 2005 / OIML R49

Optional Features (Pulse Emitter Pre-Equipment)

	Reed switch pulse	A group signals for each			
	Positions of special pointer	X0.01	X0.1	X1	X10
	Water quantity for each circle	0.1m ³	1m ³	10m ³	100m ³
	DN 40/50/65/80/100/125	•	•		
	DN 150/200		•	•	
DN 250/300/350/400/500			•	•	

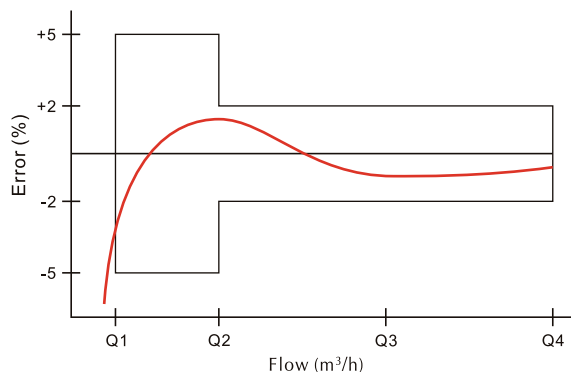
Dial Plate



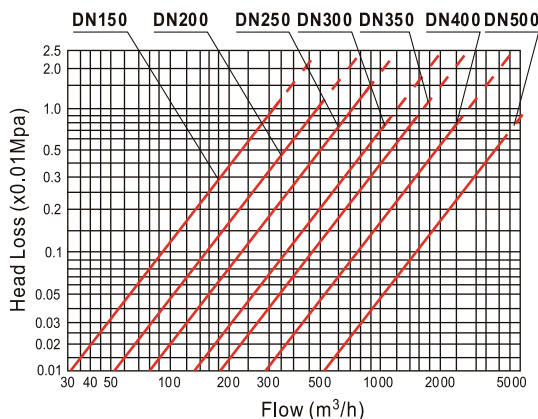
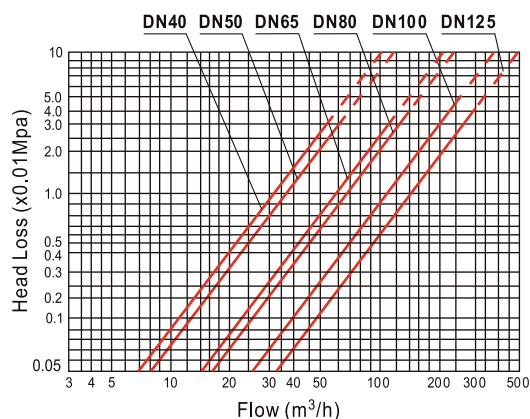
Flow Sensor

A small rotating "star" in the center of the dial plate helps to detect even the smallest flow through the mater

Accuracy Curve



Head Loss Curve



How to order

Model	Optional	Diameter	Flange Standard	Outputs*
DWM	AF - Standard (with preparation for Electrical Output) AE - With Electrical Output AH - Hot Water AQ - Hot water with Electrical Output	2" - 20" 50mm - 500mm	ISO PN16 ANSI 125 BSTD JIS 10 ABNT PN16	V - Volume (Electrical) F - Flow (Optical)

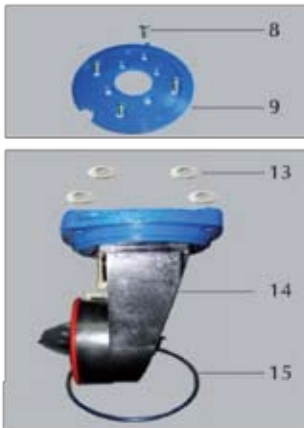
Example: Volumetric Electric output, 80mm, ANSI125 flange
DWM-AE-3-AN-V

Parts List

No.	Description	Qty	Material
1	Hinge Pin	1	Brass
2	Lid	1	ABS
3	Plug	2	ABS
4	Upper Retaining Ring	1	ABS
5	Register	1	Assembly
6	Bracket	1	ABS
7	Screw	3	1Cr18Nig
8	Screw	4	1Cr18Nig
9	Immovable Plate	1	ABS
10	Register House	1	ABS
11	Screw	3	1Cr18Nig
12	Screw with hole	1	1Cr18Nig
13	Gasket	4	1Cr18Nig
14	Measuring Unit	1	Fe / Cu / ABS / PA / PPO
15	O-ring	1	NBR
16	Body	1	Iron with Epoxy Coating
17	Copper Wire	2	Brass
18	Seal Lead	2	Lead
19	Seal Pin	1	1Cr18Nig
20	Rivet	2	Brass
21	Label	1	Brass / Stainless Steel
22	Flange Gasket	2	NBR



Turbine Assembly Kit



Register Assembly Kit



Woltman Kit Catalogue No.

Kit / Size	2"	3"	4"	6"	8"	10"	12"
Turbine Assembly Kit (parts 8,9,14,15)	WL0339000000001	WL0339000000001	WL0339000000001	WL0639000000001	WL0639000000001	WL1039000000001	WL1239000000001
Register Assembly Kit (parts 1-7,10-13)	WL0235000000001	WL0335000000001	WL0435000000001	WL0635000000001	WL0835000000001	WL1035000000001	WL1235000000001



Innovation
Innovation

Expertise
Expertise

Reliability
Reliability



Hundreds of companies in the industrial, civil engineering, municipal and agricultural sectors around the world have chosen DOROT's innovative and field-proven technologies. Since its establishment in 1946, DOROT leads the valves market with continued innovation, uncompromising excellence and firm commitment to its customers, consulting and supporting them through all stages of a project and overcoming challenges in R&D, design, implementation, and maintenance.



www.dorot.com